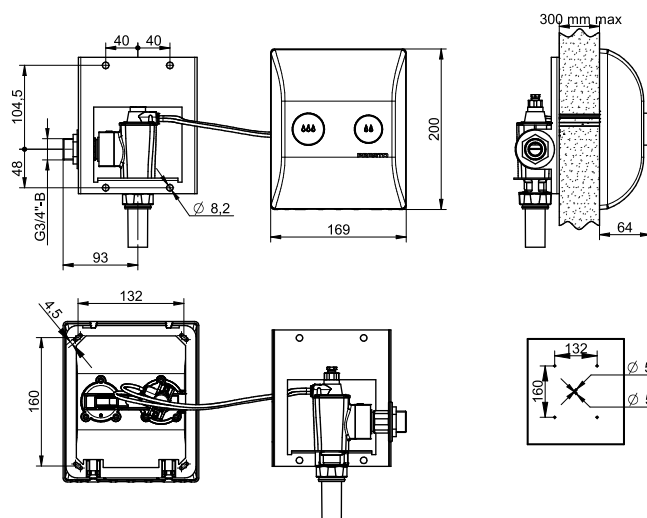


**Range:** PRESTO 1000 XL DVA (Dual Adjustable Volume) for fire-resistant wall

**Ref:** 18720 - Kit for direct flush valve, cross-partition control, 3-6l, S®



#### > Recommended working pressure:

- 1 to 5 bar

#### > Volume volume per flush :

- Large volume: from 6 to 9 liters, adjustable with wrench
- Small volume: from 2.5 to 5 liters, adjustable by the slider on the front plate
- Anti-water-hammering device
- Automatic flow regulator ensuring a constant flow rate of 1 l/s, from 1.2 bar to 4 bar of dynamic pressure

#### > Flow time:

- Large volume: 6 to 9 seconds
- Small volume: 2 to 5 seconds

#### > Hydraulic supply:

- Right or left square M G 3/4" (20x27)
- Outlet connection on flush pipe Ø 28 mm

#### > Wall thickness:

- Compatible for partitions from 15 to 300mm

#### > Material and colour finish:

- Brass body, nickel-chrome finish
- Injected metal front plate, anti-fingerprint brushed metal finish

#### > Safety:

- Patented anti-blocking "S" system preventing the tap to be blocked in open position to avoid continued water flow
- Vacuum breaker device: prevents the drinking water network from being contaminated by polluted water backflow
- Control plate and power tube of the bowl: As part of an appropriate installation, it allows to comply with the safety rules of a public receiving establishment (PRE), Article CO 31 of the order of June 25, 1980 modified which specifies that no degree of fire resistance is required for the ducts if their nominal diameter is less than or equal to 75 mm , provided the hole is not larger than the diameter of the duct or capillaries running through the wall
- Rear access required for maintenance

#### > Delivered with:

- 1 Double button anti-fingerprint brushed metal front, integrated ignitor
- 1 Flush valve PRESTO 1000 XL
- 1 Metal mounting plate as flush valve support
- 1 PVC flush tube
- 1 Installation instructions

#### > Standards & approvals:

- Acoustic class II
- Brass body in accordance with EN 1982, EN 12164, EN 12165
- Molded chrome-plated front plate in accordance with EN 12540
- 200-hour neutral salt spray resistant (NSS) in accordance with ISO 9227

